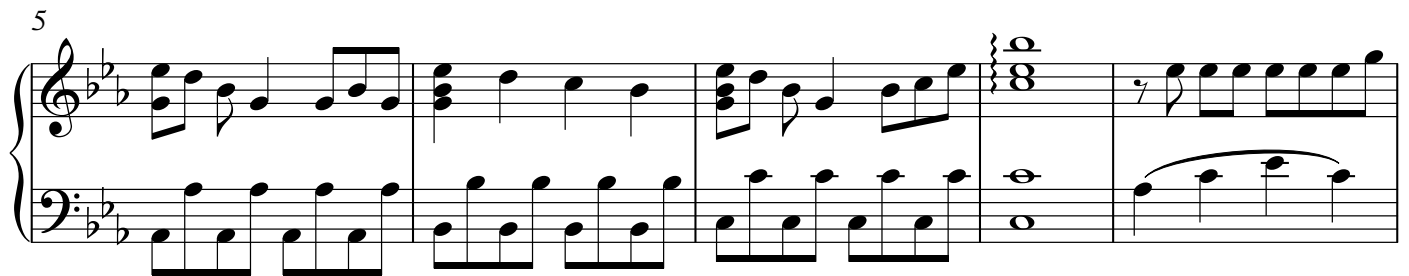
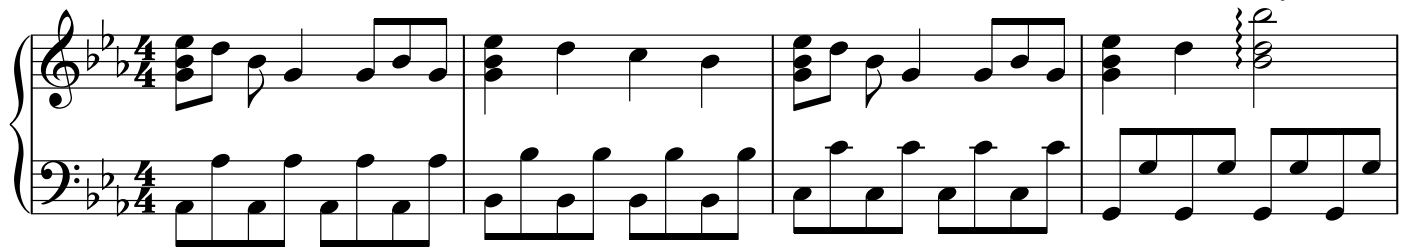


MUV-LUV
Muv-Luv Opening Song

Allegretto (♩ = 120)

Arranged by Dimemannico2

Transcribed by H.Bellz



29

Measures 29-32 of a musical score. The key signature changes from two flats (B-flat, E-flat) to two sharps (F-sharp, C-sharp) at measure 31. The melody in the right hand features chords and moving lines, while the left hand plays a steady eighth-note accompaniment.

33

Measures 33-36 of a musical score. The key signature remains two sharps (F-sharp, C-sharp). The right hand continues with chords and moving lines, and the left hand maintains the eighth-note accompaniment.

37

Measures 37-40 of a musical score. The key signature remains two sharps (F-sharp, C-sharp). The right hand continues with chords and moving lines, and the left hand maintains the eighth-note accompaniment.

41

Measures 41-44 of a musical score. The key signature remains two sharps (F-sharp, C-sharp). The right hand continues with chords and moving lines, and the left hand maintains the eighth-note accompaniment.

45

Measures 45-48 of a musical score. The key signature remains two sharps (F-sharp, C-sharp). The right hand continues with chords and moving lines, and the left hand maintains the eighth-note accompaniment.

49

Measures 49-52 of a musical score. The key signature changes from two sharps (F-sharp, C-sharp) to one sharp (F-sharp) at measure 51. The right hand features a melodic line with a long slur over measures 51 and 52, while the left hand continues with the eighth-note accompaniment.

52

3

This system contains measures 52, 53, and 54. The key signature is three sharps (F#, C#, G#). Measure 52 features a complex chordal texture in the right hand with a triplet of eighth notes in the bass. Measure 53 continues the right-hand texture with a triplet of eighth notes in the bass. Measure 54 shows a melodic line in the right hand with a flat accidental on the eighth note, and a triplet of eighth notes in the bass.

55

This system contains measures 55, 56, and 57. Measure 55 has a rapid sixteenth-note melody in the right hand and a steady eighth-note bass line. Measure 56 continues the sixteenth-note melody in the right hand. Measure 57 features a final sixteenth-note flourish in the right hand and a half-note bass line.

58

This system contains measures 58, 59, 60, 61, and 62. Measure 58 has a half-note chord in the right hand and a half-note bass line. Measure 59 features a half-note chord in the right hand and a half-note bass line. Measure 60 has a half-note chord in the right hand and a half-note bass line. Measure 61 has a half-note chord in the right hand and a half-note bass line. Measure 62 has a half-note chord in the right hand and a half-note bass line.

63

This system contains measures 63, 64, 65, and 66. Measure 63 has a half-note chord in the right hand and a half-note bass line. Measure 64 has a half-note chord in the right hand and a half-note bass line. Measure 65 has a half-note chord in the right hand and a half-note bass line. Measure 66 has a half-note chord in the right hand and a half-note bass line.

67

This system contains measures 67, 68, and 69. Measure 67 has a half-note chord in the right hand and a half-note bass line. Measure 68 has a half-note chord in the right hand and a half-note bass line. Measure 69 has a half-note chord in the right hand and a half-note bass line.

70

rit.

This system contains measures 70, 71, and 72. Measure 70 has a half-note chord in the right hand and a half-note bass line. Measure 71 has a half-note chord in the right hand and a half-note bass line. Measure 72 has a half-note chord in the right hand and a half-note bass line.